

- BASS CHARTS -

SUMMERTIME

♩ = 121

TAB 4/4

5 — 7 — 8 — 7 | 5 — 7 — 8 — 7 | 5 — 7 — 8 — 7 | 5 — 7 — 8 — 7

This line of tablature consists of four measures. Each measure contains a sequence of notes: 5, 7, 8, 7. The notes are connected by horizontal lines, indicating they are played in sequence. Vertical tick marks are placed below each note to indicate fret positions.

5 — 7 — 8 — 7 | 5 — 7 — 8 — 7 | 7 — 7 — 7 — 7 | 7 — 0 — 2 — 4

This line of tablature consists of four measures. The first two measures have notes 5, 7, 8, 7. The third measure has four notes of 7. The fourth measure has notes 7, 0, 2, 4. Vertical tick marks are placed below each note to indicate fret positions.

5 — 7 — 8 — 7 | 5 — 7 — 8 — 7 | 5 — 7 — 8 — 7 | 5 — 7 — 8 — 7

This line of tablature consists of four measures, each containing the sequence of notes 5, 7, 8, 7. Vertical tick marks are placed below each note to indicate fret positions.

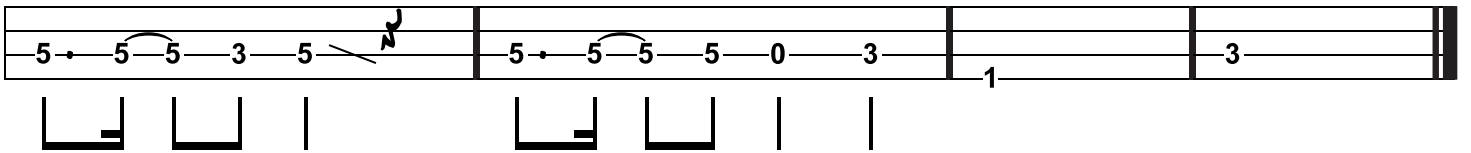
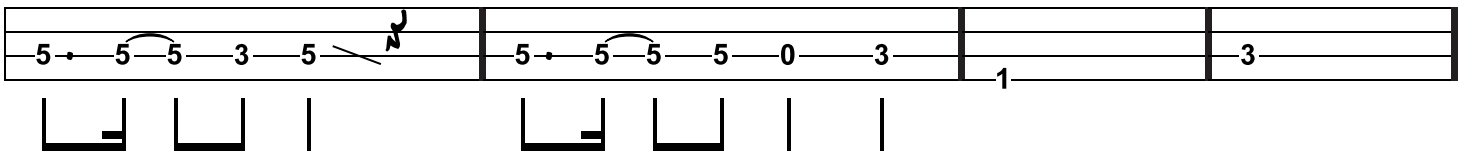
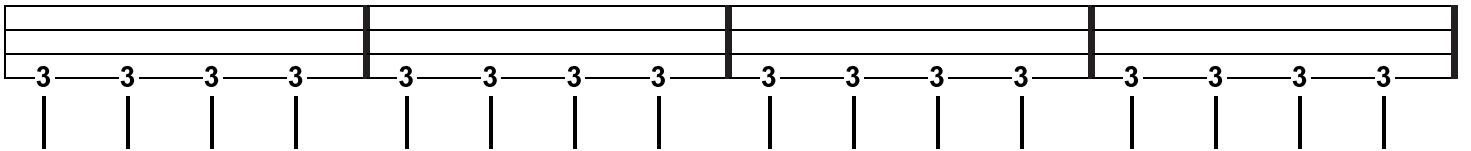
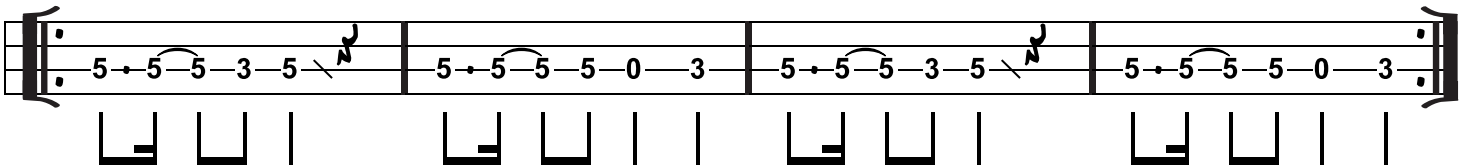
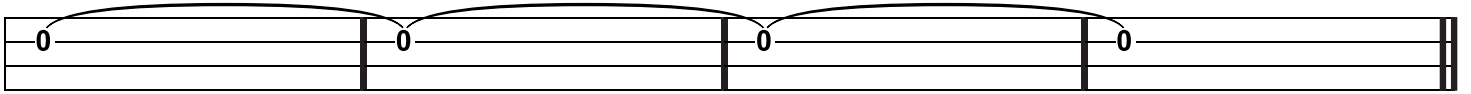
3 — 3 — 3 — 3 | 5 — 5 — 5 — 5 | 5 — 5 — 5 — 5 | 7 — 7 — 7 — 7

This line of tablature consists of four measures. The first measure has four notes of 3. The second and third measures each have four notes of 5. The fourth measure has four notes of 7. Vertical tick marks are placed below each note to indicate fret positions.

TALKING ABOUT A REVOLUTION

A musical staff with four measures, each containing a sequence of notes and fingerings. The notes are indicated by dots on the staff, and the fingerings are indicated by numbers (3, 7, 5, 7, 0, 5, 7, 5, 3, 7, 5, 7, 0, 5, 7) placed above the notes. Red and green vertical lines below the staff indicate the fret positions for each note. Red lines are placed at fret 3, 5, and 7. Green lines are placed at fret 7, 5, and 3. The notes are: Measure 1: 3rd fret (red), 7th fret (green), 5th fret (red), 7th fret (green). Measure 2: 0th fret (black), 5th fret (red), 7th fret (green), 5th fret (red). Measure 3: 3rd fret (red), 7th fret (green), 5th fret (red), 7th fret (green). Measure 4: 0th fret (black), 5th fret (red), 7th fret (green), 5th fret (red).

ANOTHER BRICK ON THE WALL, Pt. 2



HOTEL CALIFORNIA

VERSE

Musical notation for the Verse section, showing a single staff with fret numbers: 7, 2, 5, 7, 3, 5, 0, 2.

CHORUS

Musical notation for the Chorus section, showing a single staff with fret numbers: 3, 5, 2, 2-4, 5, 2-4, 3, 5, 0, 2. Below the staff is a chord diagram with four vertical lines and a square box under the second line.

Musical notation for the Chorus section, showing a double staff with fret numbers: 7-7, 9, 9, 7, 7, 9, 9, 7, 2, 2, 4, 4, 7, 4, 4, 4, 2. Below the staff are two chord diagrams.

Musical notation for the Chorus section, showing a double staff with fret numbers: 5, 5, 7, 7, 7, 7, 5, 7, 7, 9, 9, 7, 7, 9, 9, 7. Below the staff are two chord diagrams.

Musical notation for the Chorus section, showing a double staff with fret numbers: 3, 3, 5, 5, 5, 5, 5, 3, 5, 5, 7, 7, 7, 7, 7, 5. Below the staff are two chord diagrams.

Musical notation for the Chorus section, showing a double staff with fret numbers: 0, 0, 2, 2, 2, 2, 2, 0, 2, 2, 4, 4, 4, 4, 4, 2. Below the staff are two chord diagrams.

COME TOGETHER

$\text{♩} = 85$

The first system of guitar tablature consists of four measures. Each measure has a top staff with a hammer-on (H) over a 10-10 double note and a 12 fret. The bottom staff contains the fret numbers: 5-5-10-12. Below each measure is a diagram showing the fretting hand with the index finger hammering onto the 10th fret of the second string.

The second system of guitar tablature consists of three measures. The first two measures have a top staff with a hammer-on (H) over a 10-10 double note and a 12 fret. The bottom staff contains the fret numbers: 5-5-10-12. The third measure has a top staff with a hammer-on (H) over a 5-5 double note and a 7 fret. The bottom staff contains the fret numbers: 5-5-5-7-7. Below each measure is a diagram showing the fretting hand.

The third system of guitar tablature consists of four measures. The first measure has a top staff with a hammer-on (H) over a 5-5 double note and a 7 fret. The bottom staff contains the fret numbers: 5-5-5-7-7. The second measure has a top staff with a 3 fret and a 3 fret. The bottom staff contains the fret numbers: 3-3. The third measure has a top staff with a 7 fret, 7 fret, 7 fret, 7 fret, 7 fret, 7 fret, 5 fret, and 5 fret. The bottom staff contains the fret numbers: 7-7-7-7-7-7-5-5. The fourth measure has a top staff with a 3 fret, 3 fret, 3 fret, 3 fret, and 5 fret. The bottom staff contains the fret numbers: 3-3-3-3-5. Below each measure is a diagram showing the fretting hand.

BILLIE JEAN

A

4-2-4-2 | 4-2-4-2 | 4-2-4-2 | 4-2-4-2
2-4-4-2-4 | 2-4-4-2-4 | 2-4-4-2-4 | 2-4-4-2-4

4-2-4-2 | 4-2-4-2 | 4-2-4-2 | 4-2-4-2
4-4-4-2-4 | 4-4-4-2-4 | 2-4-4-2-4 | 2-4-4-2-4

B

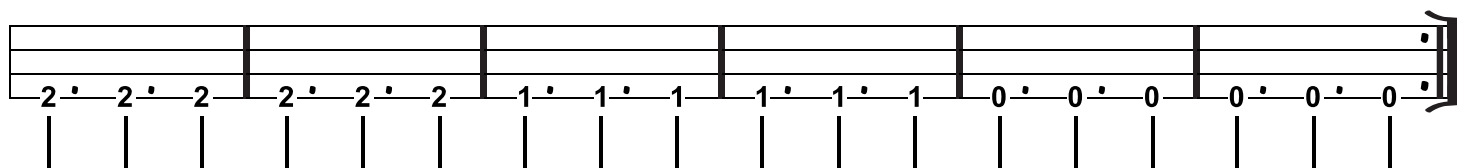
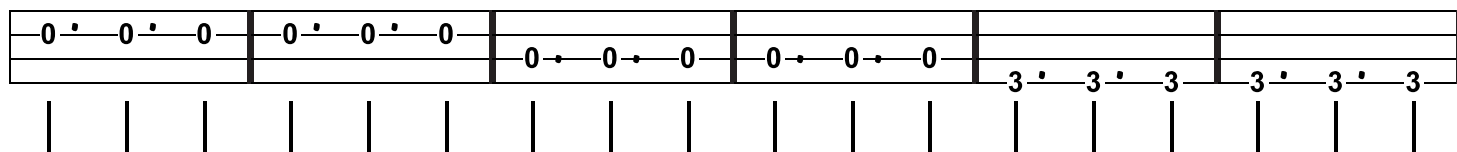
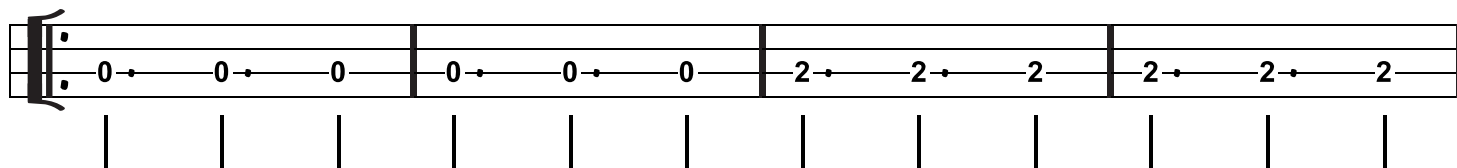
0-0-0-0 | 0-0-0-0 | 0-0-0-0
2-2-2-2 | 2-2-2-2 | 2-2-2-2

0-0-0-0 | 0-0-0-0 | 4-4-4-4
2-2-2-2 | 2-2-2-2 | 4-4-4-4

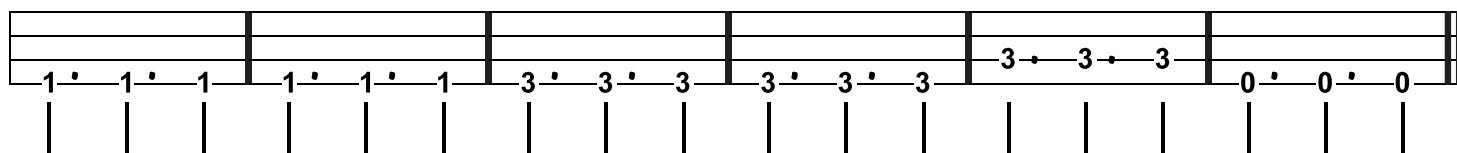
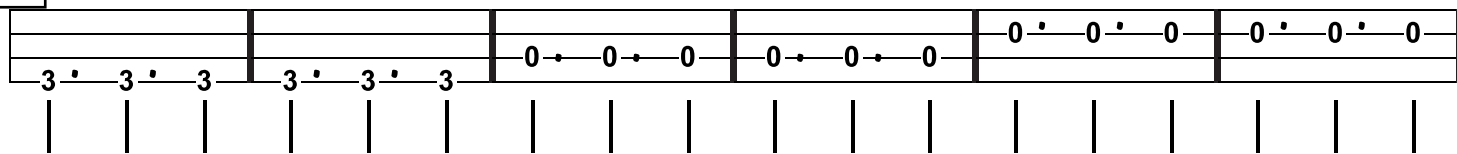
LIBERTANGO

A

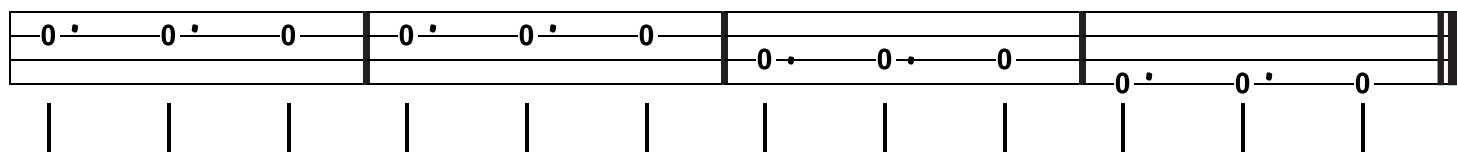
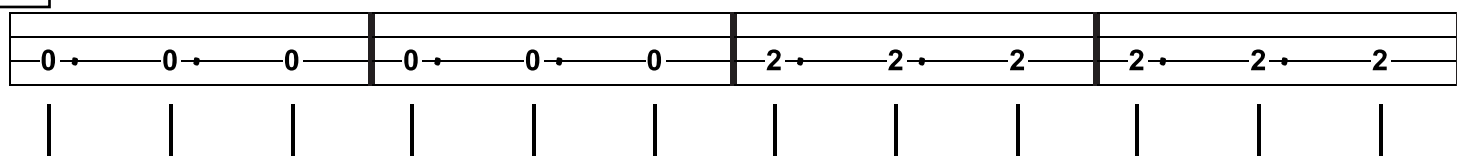
♩ = 120



B



C



12 BAR BLUES

♩=100

First staff of music, measures 1-4. The staff is a five-line guitar fretboard. The first measure starts with a double bar line and a key signature signature (one sharp). The notes are: 6 (bottom line), 5 (first space), 8 (second space), 5 (first space). The second measure notes are: 6 (bottom line), 5 (first space), 8 (second space), 5 (first space). The third measure notes are: 6 (bottom line), 5 (first space), 8 (second space), 5 (first space). The fourth measure notes are: 6 (bottom line), 5 (first space), 8 (second space), 5 (first space). Vertical tick marks are placed below the staff at the beginning of each measure and at the end of each measure.

Second staff of music, measures 5-8. The notes are: 6 (bottom line), 5 (first space), 8 (second space), 5 (first space). The second measure notes are: 6 (bottom line), 5 (first space), 8 (second space), 5 (first space). The third measure notes are: 6 (bottom line), 5 (first space), 8 (second space), 5 (first space). The fourth measure notes are: 6 (bottom line), 5 (first space), 8 (second space), 5 (first space). Vertical tick marks are placed below the staff at the beginning of each measure and at the end of each measure.

Third staff of music, measures 9-12. The notes are: 8 (second space), 7 (first space), 10 (third space), 7 (first space). The second measure notes are: 6 (bottom line), 5 (first space), 8 (second space), 5 (first space). The third measure notes are: 6 (bottom line), 5 (first space), 8 (second space), 5 (first space). The fourth measure notes are: 8 (second space), 7 (first space), 10 (third space), 7 (first space). The staff ends with a double bar line and a key signature signature (one sharp). Vertical tick marks are placed below the staff at the beginning of each measure and at the end of each measure.

SO WHAT

0-7-9-10 7-9 10-7 7-7 | 0-7-9-10 7-9 10-7 7

↓ □ □ □ □ | ↓ □ □ □ □

0-7-9-10 7-9 10-7 7-7 | 9-9-9-9-7 7-7-7

↓ □ □ □ □ | | □ | ↓

5-7-8 5 7 4-5-6 7-5-4 7 5 8-7-8

| | | | | | | | | | |

MONEY

REPEAT 10x

Handwritten guitar tablature for the first line of 'Money'. It consists of two staves. The first staff has a treble clef and a 3/4 time signature. The notes are: 4-4-2 (quarter notes), 4-2-5 (quarter notes), 4-2 (quarter notes), and 4-2-5 (quarter notes). The second staff has a bass clef and a 4/4 time signature. The notes are: 2 (quarter note), 5 (quarter note), 2 (quarter note), and 5 (quarter note). There are two downward-pointing arrows under the first and third measures of the bass staff, indicating a power chord. The piece ends with a double bar line and repeat dots.

Handwritten guitar tablature for the second line of 'Money'. It consists of two staves. The first staff has a treble clef and a 4/4 time signature. The notes are: 4-4-4 (quarter notes), 4-3 (quarter notes), and 2 (quarter note). The second staff has a bass clef and a 4/4 time signature. The notes are: 2 (quarter note), 5 (quarter note), 4 (quarter note), 0 (quarter note), 3 (quarter note), 5 (quarter note), 1 (quarter note), and 5 (quarter note). The notes 2, 5, 0, and 5 in the bass staff are color-coded: 2 is blue, 5 is red, 0 is black, and 5 is red. The piece ends with a double bar line.